



# Allegheny County Health Department

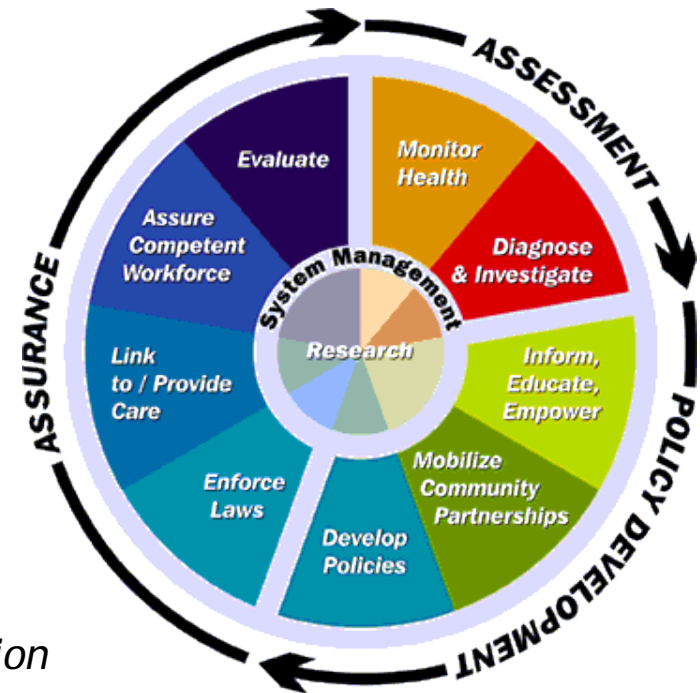
## Health in All Policies in Allegheny County

Karen Hacker, MD MPH  
Director



## BUREAUS

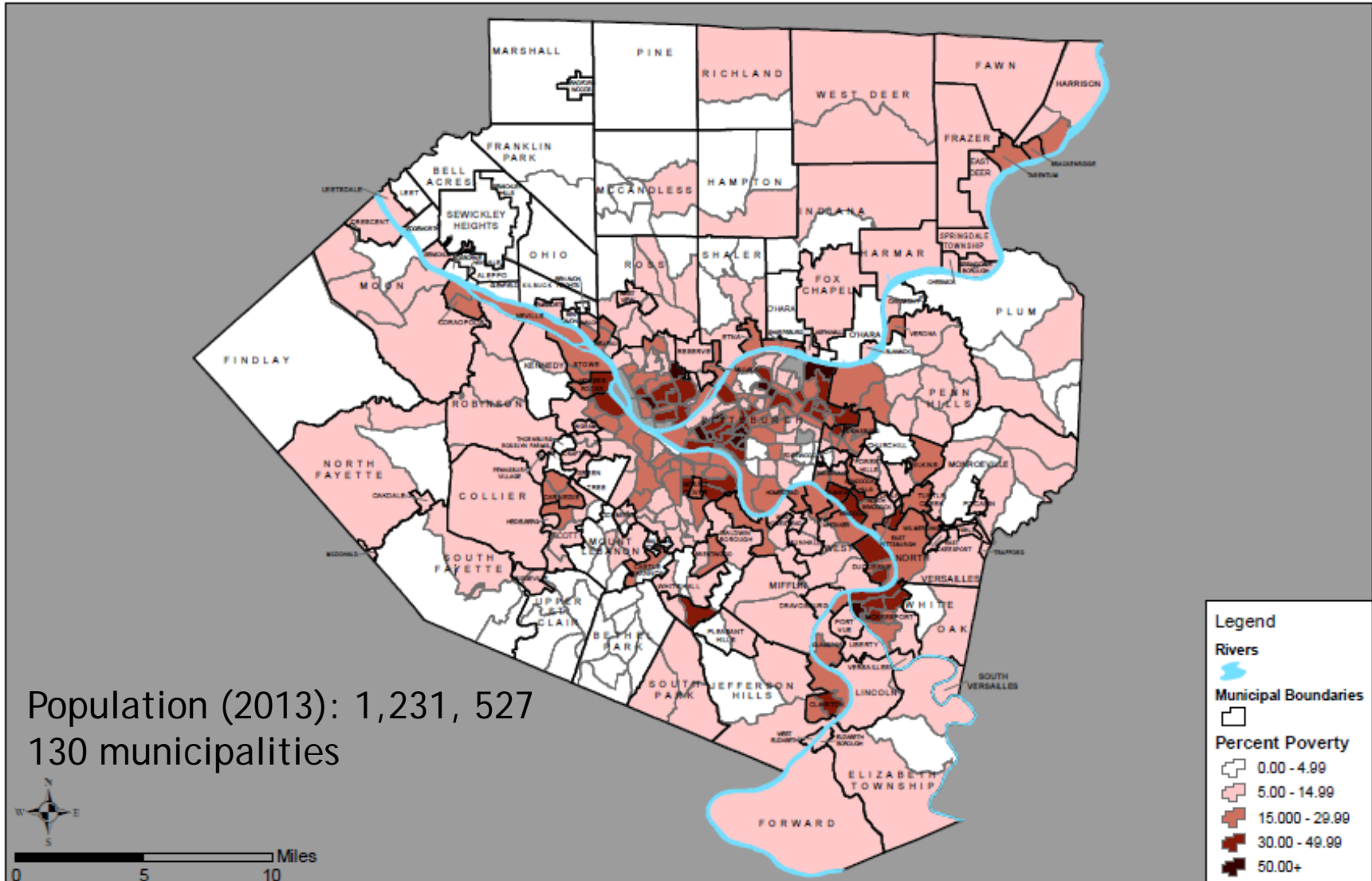
- *Environmental Health*
  - *Air*
  - *Water*
  - *Housing*
  - *Restaurants*
  - *Plumbing*
- *Public Policy and Community Relations*
  - *Policy*
  - *Emergency Preparedness*
  - *Legal*
  - *Communications*
- *Community Health Promotion and Disease Prevention*
  - *STD/HIV*
  - *Dental*
  - *TB*
  - *MCH*
  - *WIC*
  - *Chronic Disease*
- *Biostatistics and Epidemiology*
- *Administration*
- *Laboratory*



Workforce~ 370 FTEs  
31 million dollar budget

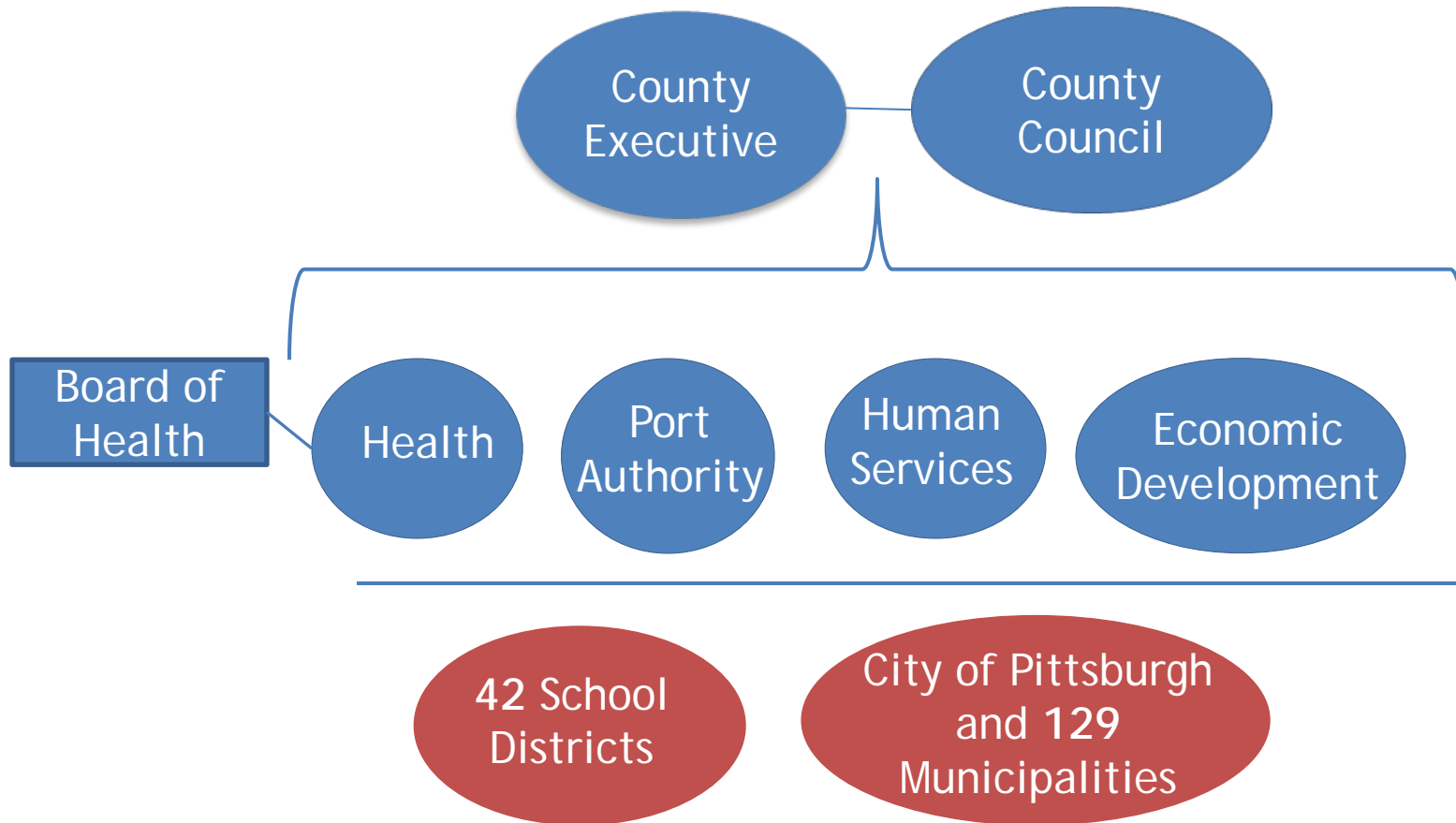


## Percent Below Poverty Level in Allegheny County, 2012





# Governing Health in Allegheny

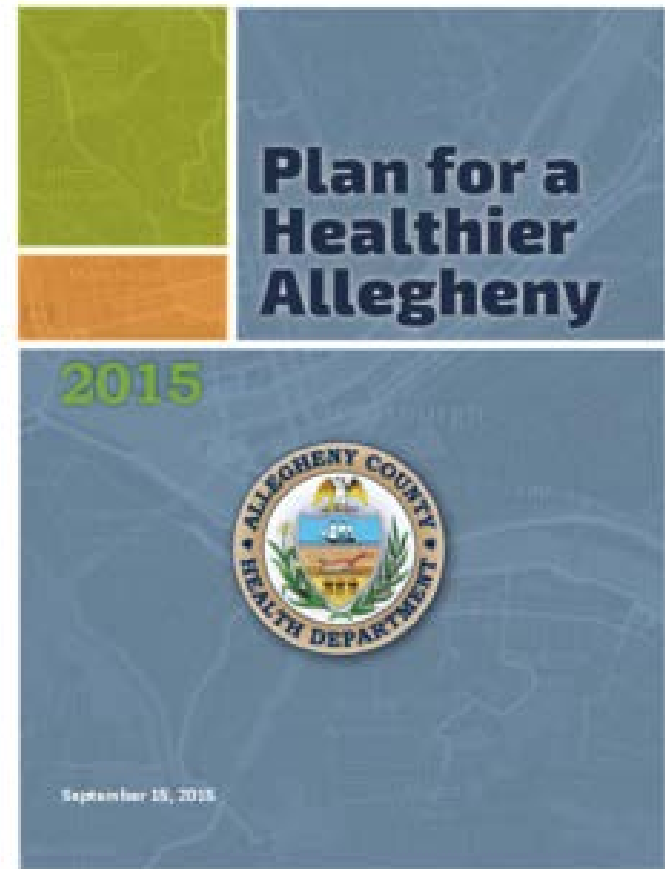
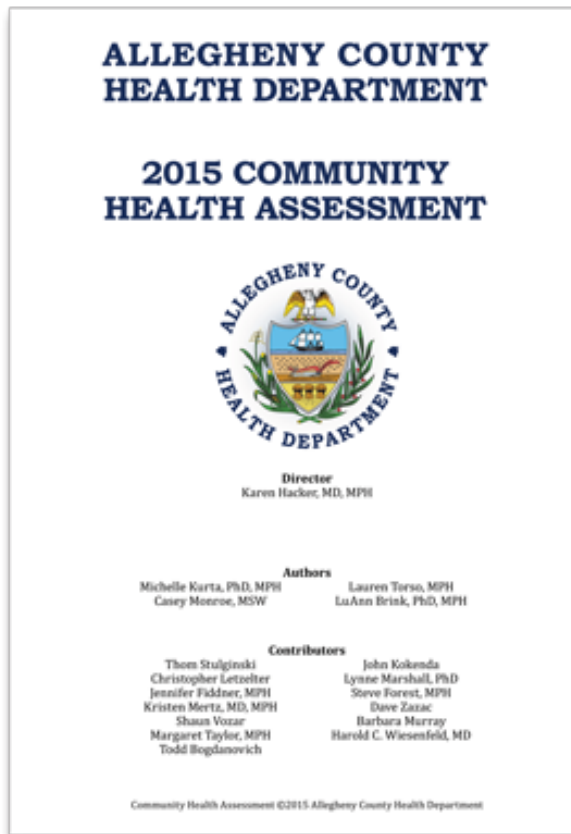


*\* Allegheny County is a second-class county with limited autonomy*





# Assessment and Prioritization







# Plan for a Healthier Allegheny

Social Determinants of Health  
Health Equity



Maternal and  
Child Health



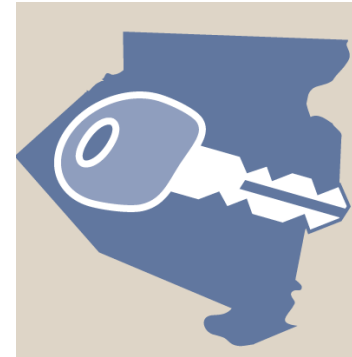
Environment



Chronic Disease  
Health Risk  
Behaviors



Mental Health  
and Substance  
Use Disorders



Access



# HiAP Stakeholders in Allegheny County

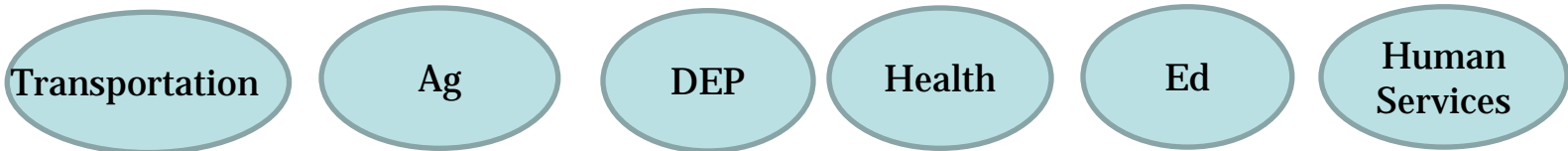
## Federal



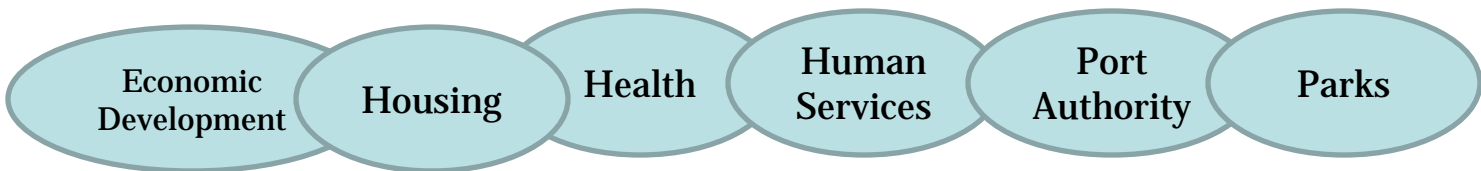
## Regional



## State



## County



## Local







[www.livewellallegheny.com](http://www.livewellallegheny.com)



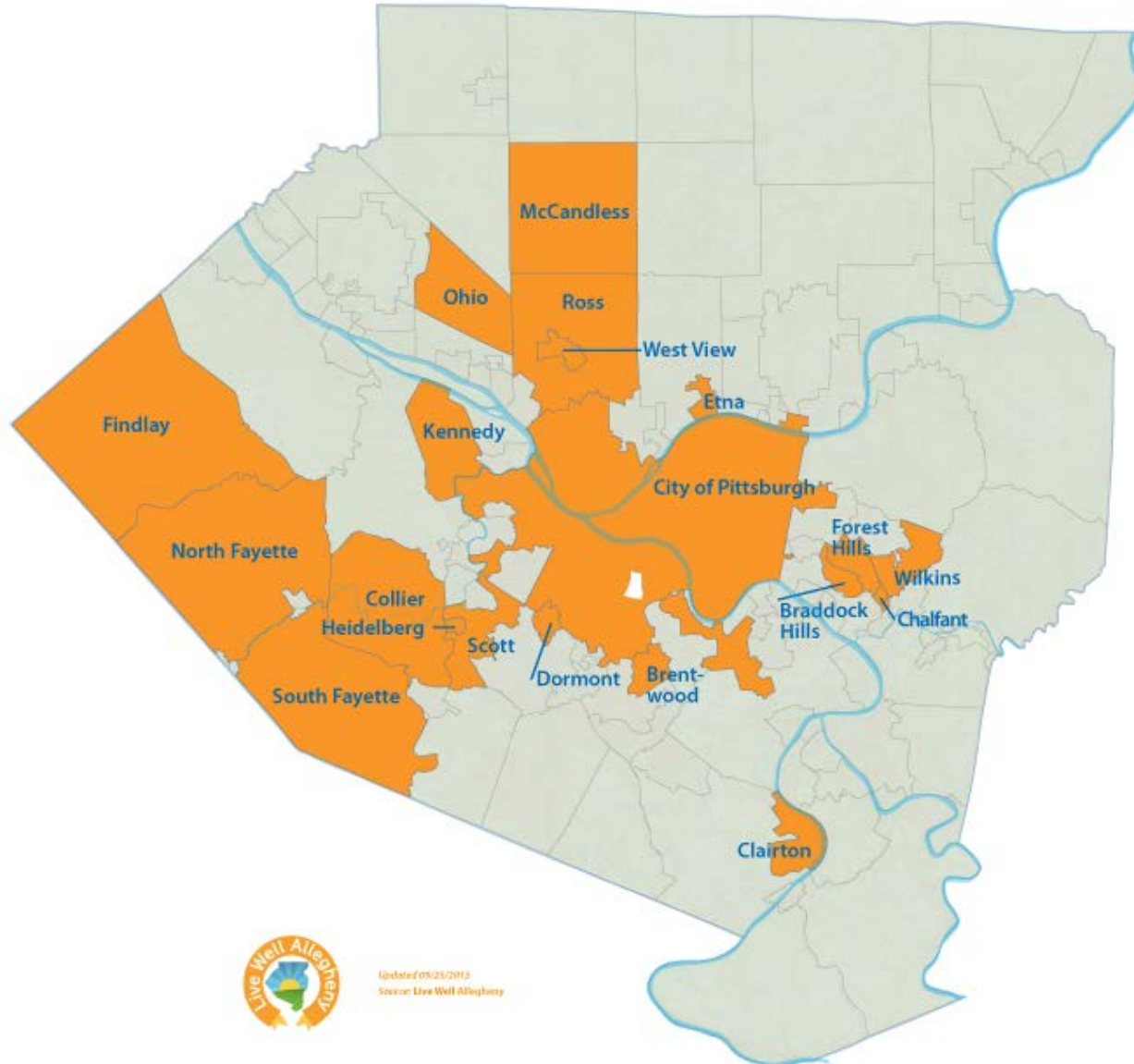
A WALK IN THE PARK CAN KEEP  
YOU YOUNG AT HEART

Allegheny County operates nine parks in the region spanning over 12,000 acres. The County is also home to two State Parks





## Live Well Allegheny Communities



Updated 05/25/2013  
Source: Live Well Allegheny



# Health in All Policy Strategies

- Collaborate with economic development to incentivize “active transportation” through grant program to low-income municipalities
- Provided recommendations for incorporating health into comprehensive planning at County and City level
  - Prioritize mixed-use infill development
  - Revise zoning codes as needed to establish farmers’ markets, community gardens, and school gardens as “permitted” or “conditional” uses in certain districts
  - Work with schools and community centers to establish “joint use” agreements
- Work with food sector to eliminate food deserts and improve food offerings
- Support smoke free housing and healthy homes models
- Work with Human Services to improve data sharing



# Rowing in the Same Direction

